

TORRES
EVX
BEYOND EXPECTATION





THE BEST OF BOTH WORLDS –
EV AND OFF-ROAD SUV



THE STYLISH TORRES EVX – TURNS HEADS

'Powered by Toughness' – KGM's design vision and philosophy for its cars. With its confident character lines and strong detailing such as the horizontal LED daytime running lights, The Torres EVX exudes a hip and distinctive look.



1. DOT-SHAPE LED DAYTIME RUNNING LIGHTS
2. LED HEADLIGHTS
3. FRONT BUMPER WITH NEW AERO SHUTTER



THE DISTINCTIVE DESIGN – YOU’LL TAKE A SECOND LOOK

With strong design details such as the hexagonal trim resembling the boot-mounted spare wheel cover of a traditional SUV, the design of the car’s rear view perfectly complements the front.

- 1. COMBINATION LED REAR LIGHTS
- 2. BODY-COLOURED HEXAGONAL REAR TRIM & TAILGATE HANDLE
- 3. REAR BUMPER





PUTTING ON THE STYLE IN PROFILE

Straight, bold and flowing character lines create a strong, dynamic look to drive the brand's heritage forward.



- 1. EV CHARGING PORT
- 2. 20" DIAMOND-CUT ALLOY WHEELS
- 3. FLAG STYLE EXTERIOR DOOR MIRRORS



INTERIOR DESIGN AT ITS FINEST

The future-proof slim and wide interior design enhances driver visibility and convenience

1. MOOD LIGHTING 2. 'SHIFT BY WIRE' TOGGLE SWITCH



CHARCOAL BLACK INTERIOR COLOUR



TEAL GREY & GREIGE WHITE 2-TONE INTERIOR COLOUR

MAKING THINGS EASIER, SAFER AND MORE CONVENIENT

The Torres EVX features a comprehensive suite of digital features to make driving safer and travelling more relaxed. Parking is made safe and easy with the 3D 360° 'surround view' monitoring system, while the driver can talk more comfortably with rear seat passengers thanks to an 'aided conversation' mode. Those in the back can also take a rest during a long journey by using the 'sleeper mode' to prevent music emitting from the speakers



1. REAR SEAT 'SLEEPER MODE'
2. ENHANCED CONVERSATION WITH REAR PASSENGERS
3. 3D 360° AROUND VIEW MONITORING SYSTEM

TECHNOLOGY TO PUT YOU IN CONTROL

To minimise the number of physical buttons and controls and simplify driving, The Torres EVX features an ergonomically designed dashboard with a futuristic, 12.3-inch digital interface.

12.3" DIGITAL INSTRUMENT CLUSTER



TOUCH SCREEN DISPLAY



1. NAVIGATION SYSTEM 2. APPLE CARPLAY & ANDROID AUTO

DUAL-ZONE AUTOMATIC AIR CONDITIONING CONDITIONING (CABIN COMFORT) MODE



TEAL GREY & GREIGE WHITE 2-TONE INTERIOR COLOUR



TEAL GREY & GREIGE WHITE 2-TONE INTERIOR COLOUR

ARE YOU SITTING COMFORTABLY?

With optimised seat designs and added convenience features, the Torres EVX offers an extremely comfortable and relaxed interior.

- 1. 8-WAY ADJUSTABLE POWERED SEATS WITH 2-WAY LUMBAR SUPPORT AT THE FRONT
- 2. HEATED SEATS, FRONT AND REAR
- 3. VENTILATED FRONT SEATS
- 4. FRONT HEADREST HANGERS
- 5. FRONT SEAT BACK POCKETS WITH MOBILE PHONE HOLDER



FULLY LOADED AND READY TO GO

With a load capacity of up to 1,662litres your needs for whatever your leisure pursuits are fully met.



CHOICE OF SEATING CONFIGURATIONS Load space in litres

- 1. 2nd row 100% FOLDED (1,662litres)
- 2. 2nd row 60% FOLDED (1,320litres)
- 3. 2nd row 40% FOLDED (1,181litres)
- 4. NORMAL SEATING (839litres)
- including hidden underfloor space

* VDA213 / 214 measurement





OPEN WIDE AND SAY "AH"!

The fully flexible load area offers complete practicality and is so large and comfortable you could even camp in it!

SMART POWER-OPERATED TAILGATE



INTERNAL TAILGATE OPENING BUTTON



ELECTRIC POWER WITH PERFORMANCE TO MATCH

The Torres EVX utilises a lithium iron phosphate battery for safety, durability and to avoid the risk of fire as well as protection from external impact. New technology on this next generation battery known as 'cell to pack' mounts the rectangular shaped blade cells directly into the battery to give higher energy efficiency and enhance safety. This helps to achieve a driving range of 462km (WLTP), more than sufficient for daily commuting as well as long distance trips on a single charge.

3-IN-1 EV DRIVE SYSTEM



Max. Power / Max. Torque
152.2kW (206.9ps) / 339Nm

The Torres EVX is equipped with a high-output 3-in-1 EV drivetrain, a 339Nm torque and 152.2 kW power motor to give efficient and stable driving.

BLADE BATTERY



Battery capacity
73.4 kWh

New technology on this next generation battery known as 'cell to pack' mounts the rectangular shaped blade cells directly into the battery pack to give higher energy efficiency and enhanced safety.



MAXIMUM DRIVING DISTANCE FROM ONE CHARGE

Combined
462km

TOWING CAPABILITY

with braked trailer
1,500kg

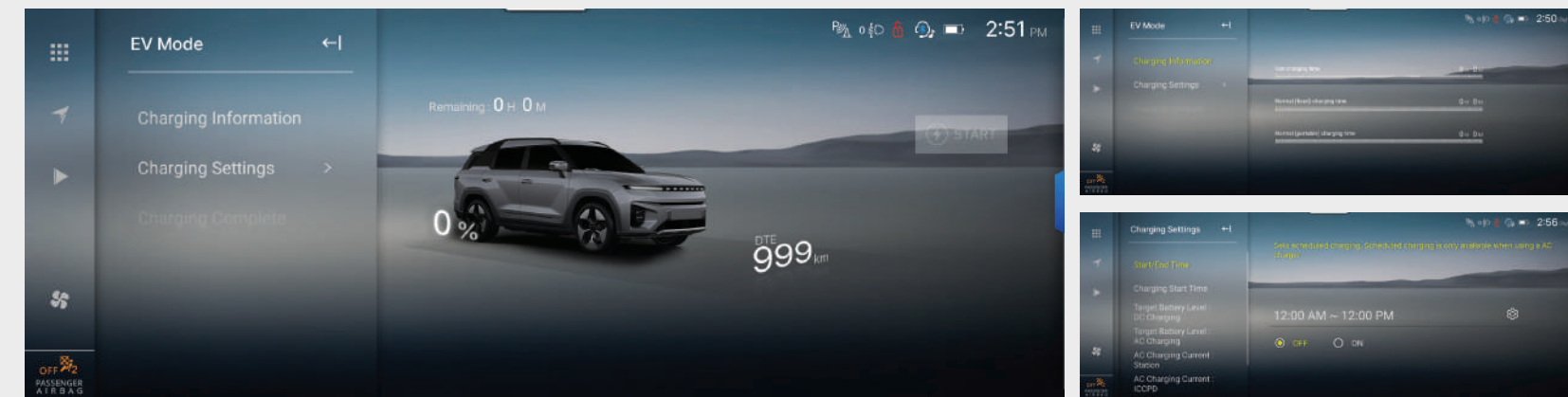
with unbraked trailer
500kg



ON CHARGE – WITH OPTIONS TO SUIT YOU

The Torres EVX offers you a faster and more convenient charging system to suit your pre-set charging parameters.

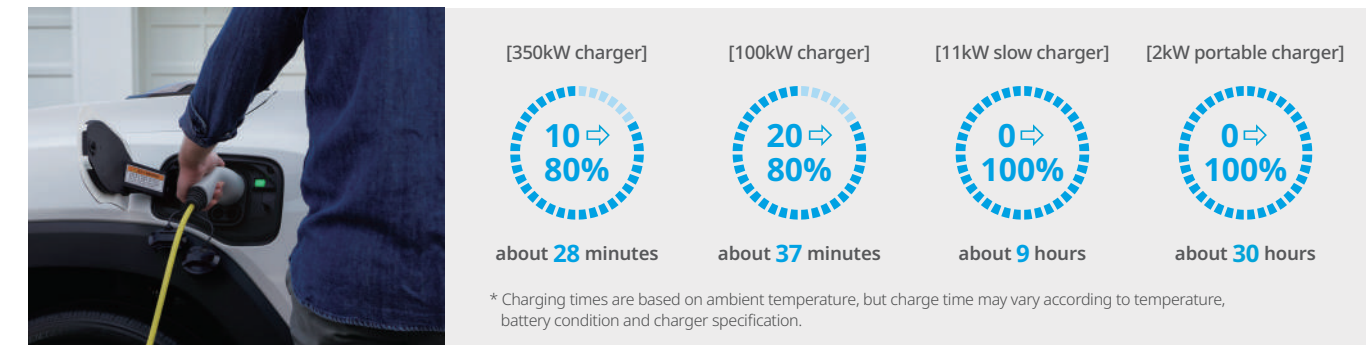
EV MODE DISPLAY



Charging information
All the charging information is displayed on the screen to show charging time, type (fast or slow) and range.

Charging management
The easy-to-use AVN menu lets you choose the charging start and end times as well as the days of the week to take advantage of discounted electric utility rates.

CHARGING TIME BY CHARGER



IN-CABLE CONTROL AND PROTECTION DEVICE

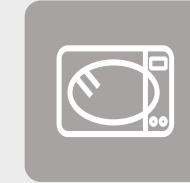


THE POWER TO DELIVER OFF-GRID

Helpfully, the Torres EVX features a vehicle-to-load (V2L) connector which means you can power-up outdoor domestic appliances straight from the car's battery when you are off-grid and want to enjoy your leisure activities in the wild to the full.



ESTIMATED ELECTRICITY USAGE TIME FOR EXAMPLE DEVICES POWERED VIA THE V2L



Microwave (1.1kW)
approx 40 hours



Hair dryer (1.6kW)
approx 27 hours



Electric heater (0.6kW)
approx 73 hours



Coffee pot (1.2kW)
approx 37 hours



Air fryer (1.5kW)
approx 29 hours



Beam projector (0.05kW)
approx 880 hours

* V2L can be used while the remaining battery power is within the range of 80% down to 20%
- Electronic devices up to a maximum of 3.5kW can be used.
- Electronic devices can be used down to 20% of battery power remaining
- V2L function stops automatically when the pre-set level of battery discharge has been reached
(The value can be set between 20% ~ 70%)

V2L CONNECTOR



ACTIVELY KEEPING YOU SAFE

Active safety equipment includes a best-in-class eight airbags as well as 81% utilisation of high-tensile steel within the chassis construction to achieve the highest level of structural safety amongst its competitors.

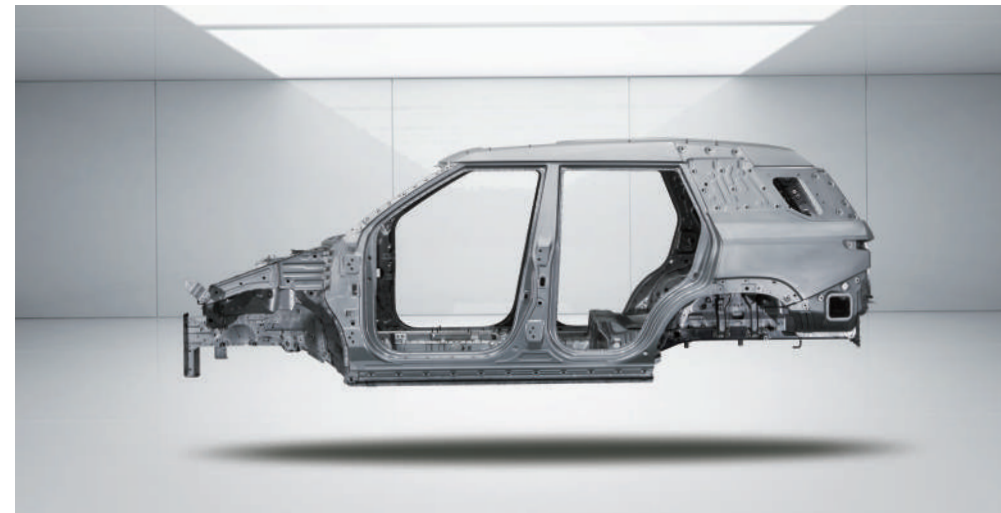
8 AIRBAGS



- 1. Driver's airbag 2. Driver's knee airbag 3. Passenger's airbag
- 4&5. Driver's & passenger's side airbags
- 6&7. Curtain airbags 8. Seat centre airbag



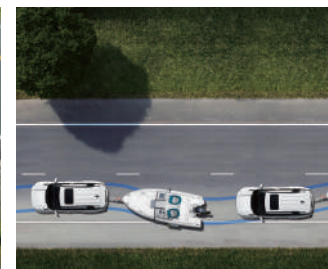
81% HIGH-TENSILE STEEL



MULTI COLLISION BRAKE



TRAILER STABILITY ASSIST



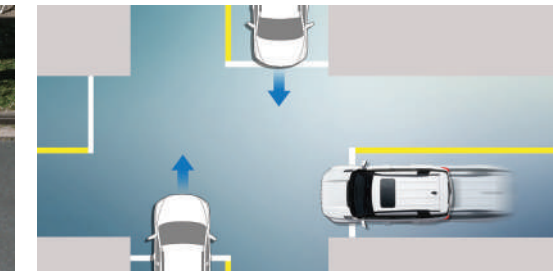
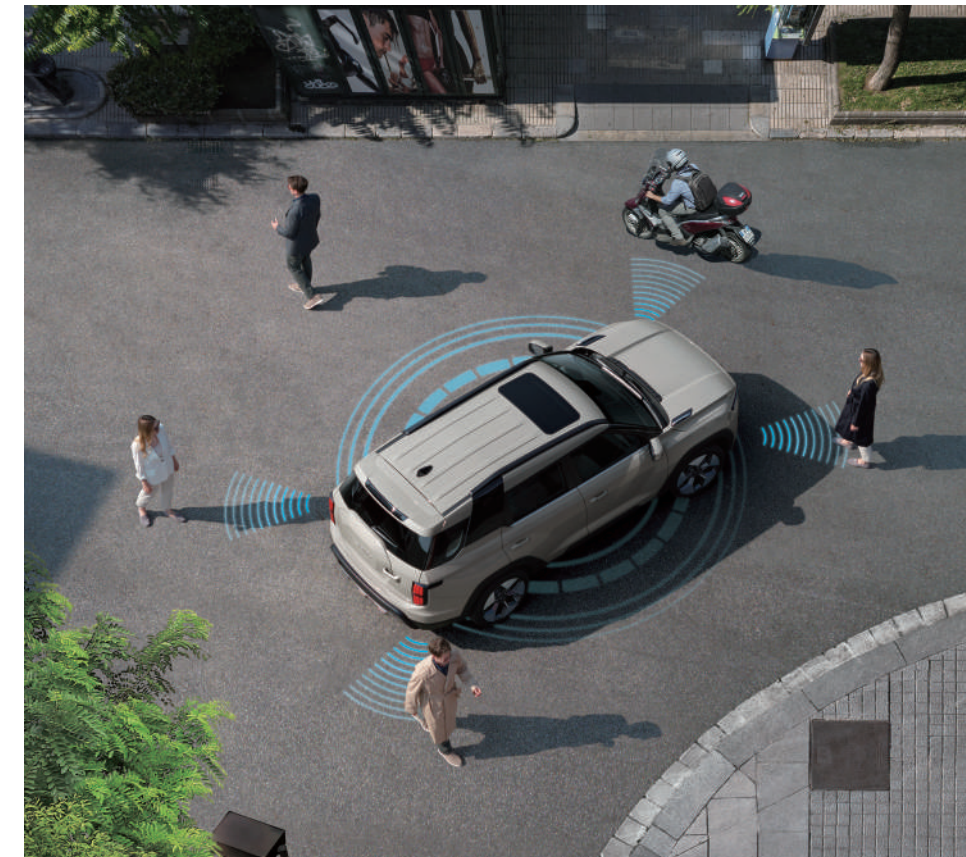
E-CALL SYSTEM



KEEPING YOU SAFE FROM EVERY ANGLE

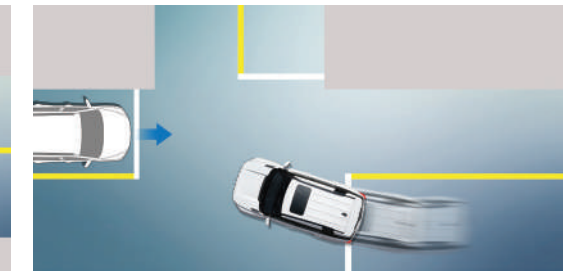
The Torres EVX incorporates Advanced Driver Assistance System (ADAS) safety technology and Intelligent Adaptive Cruise Control. A radar positioned on the front bumper and four Blind Spot Detection radars on each corner monitor every angle of the area surrounding the car and help actively control it and prevent the risk of an accident at crossroads, with oncoming vehicles, as well as vehicles approaching from the rear and side when overtaking.

4-CORNER BSD PROTECTION



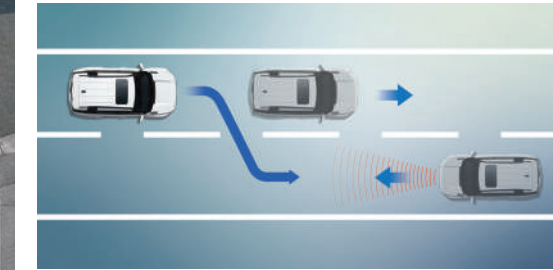
AEB - Junction Crossing

When driving straight ahead at a junction and with a vehicle approaching from the side, this function will warn the driver and apply emergency braking to avoid or reduce collision impact



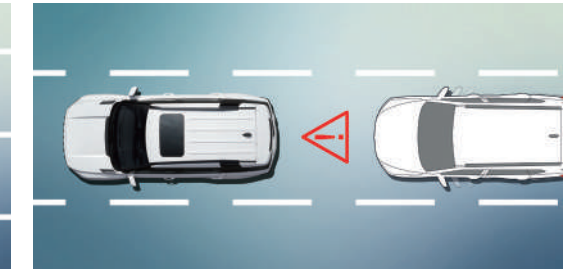
AEB - Junction Turning

When turning at an intersection and with a vehicle approaching from the opposite direction, this function will warn the driver and apply emergency braking to avoid or reduce the impact of a collision



AEB - Head On

While driving in a straight line and a vehicle suddenly approaches from the opposite direction, this will warn the driver and apply emergency brakes



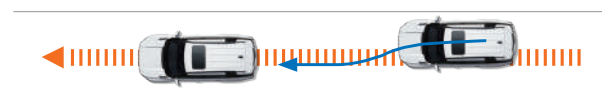
Rear-end Collision Warning

By monitoring vehicles approaching from the rear, this function will warn the driver when an impact is expected from behind



**Intelligent Adaptive Cruise Control (IACC)
Centering Lane Keeping Assist (CLKA)**

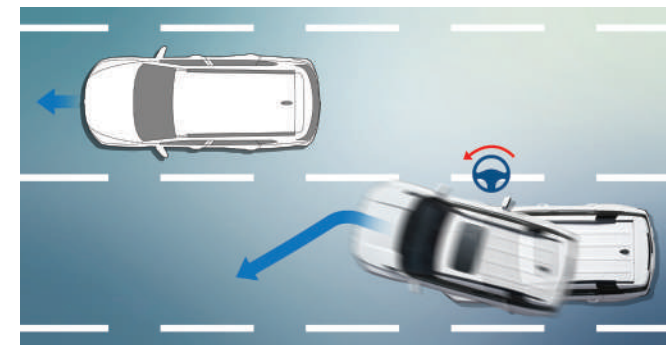
This provides lane centre assist control at any speed when in IACC autonomous driving mode. CLKA improves driver convenience by helping the vehicle to stay in the centre of its lane whether driving at high or low speed by monitoring the lane lines through the front camera and adjusting the steering.



* When using IACC, drivers are advised to keep their hands on the steering wheel and keep looking forward for safety.

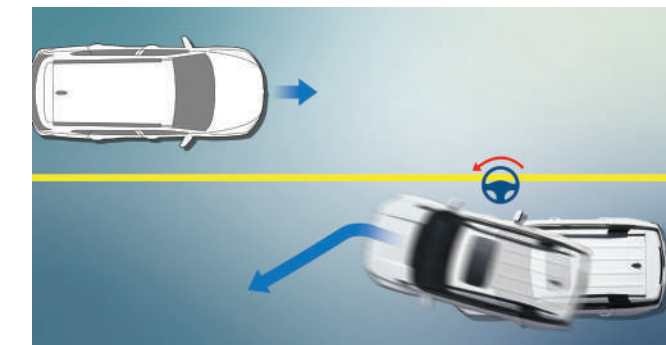
SAFETY YOU CAN TRUST

Designed to meet 'self-driving level 2.5', the Torres EVX is packed with electronic safety equipment to give the highest level of reassurance. This includes Emergency Lane Keeping and navigation-based Automatic Lane Change to automatically help steer into the adjacent motorway lane as directed by the direction indicator.



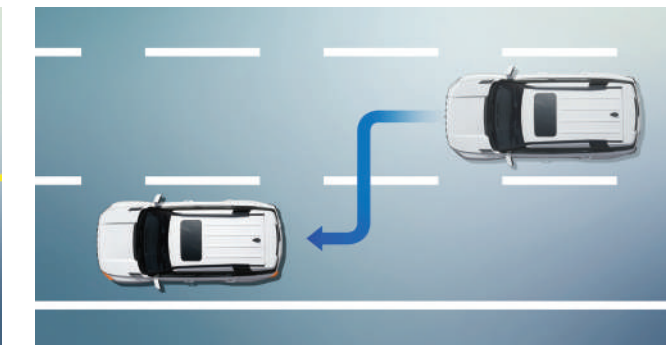
Emergency Lane Keeping – overtaking traffic

Assists steering when a risk is detected from an adjacent vehicle while overtaking



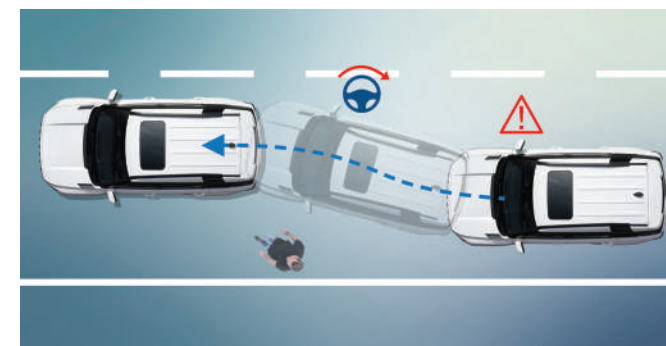
Emergency Lane Keeping – overtaking traffic

Assists steering when a risk is detected during overtaking from an oncoming vehicle



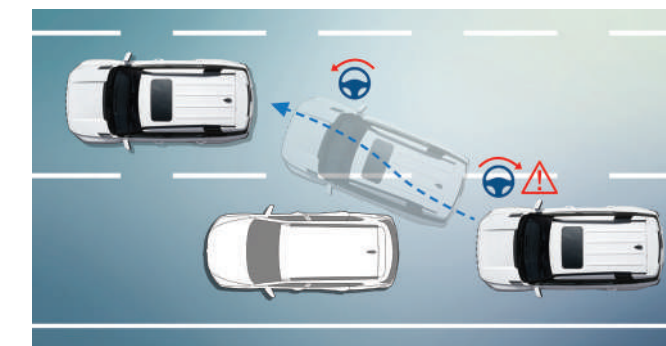
Automatic Lane Change

Navigation-based Automatic Lane Change automatically changes lanes on the highway or motorway. Vehicle will steer into the direction activated by the turn signal



Emergency Lane Keeping – Autonomous Emergency Steering

Automatically manoeuvres the steering wheel to avoid an obstacle in the lane ahead



Emergency Lane Keeping – Emergency Steering Assist

Assists steering the vehicle towards the driver's intended direction to avoid an obstacle ahead

FEATURES

BE PREPARED FOR ANYTHING — AND DO IT IN STYLE



Forward facing HD camera



Rear view HD camera



Black roof rails



Powered safety sunroof



Shark-fin antenna



Automatic welcome illumination



Rain sensing windshield wipers



Sports rear spoiler with high mounted LED stop light



Tyre pressure monitoring system



Virtual Engine Sound System (VESS)



Trailer tow hitch mounting cover



Acoustic vehicle alert system (AVAS) when reversing

MAKE YOUR DRIVING SMARTER, EASIER AND MORE COMFORTABLE.



Regenerative control paddle shifters



Wireless charger



Electronic parking brake



Heated & leather-covered steering wheel



Front cup holders



Rear cup holders



Centre under tray



Door map pockets



USB charger and USB slot in the rear



Rear centre console air vent


















Manual roller blind






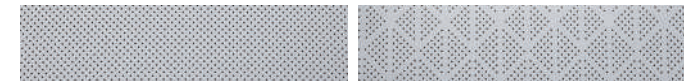
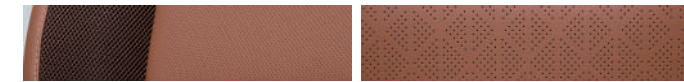

Electrochromic interior rearview mirror

COLOUR GUIDE

EXTERIOR COLOURS

<p>1-TONE</p>  <p>LATTE GREIGE (EBL)</p>	<p>2-TONE</p> 	<p>1-TONE</p>  <p>FOREST GREEN (GAO)</p>	<p>2-TONE</p> 
 <p>GRAND WHITE (WAA)</p>		 <p>DANDY BLUE (BAS) (1-Tone Only)</p>	
 <p>IRON METAL (ADE)</p>		 <p>SPACE BLACK (LAK) (1-Tone Only)</p>	
 <p>PLATINUM GREY (ADA)</p>		<p>2-TONE EXTERIOR PACK (BLACK ROOF) Black colour treatment on the C-pillar detail, styled roof rails and roof mounted air spoiler</p>  <p>Silver C-pillar detail (optional)</p>	

INTERIOR COLOURS

 <p>TEAL GREY & GREIGE WHITE 2-TONE INTERIOR COLOUR (ADF)</p>	 <p>RAWHIDE BROWN COLOUR (OBB)</p>	 <p>CHARCOAL BLACK INTERIOR COLOUR (LBH)</p>
 <p>TPU (Thermoplastic polyurethane) Genuine leather seat</p>	 <p>TPU and cloth combination seat Genuine leather seat</p>	 <p>TPU (Thermoplastic polyurethane) Genuine leather seat</p>

WHEELS

 <p>18" alloy wheels</p>	 <p>18" diamond-cut finished alloy wheels</p>	 <p>20" diamond-cut finished alloy wheels</p>
--	---	---

FEATURES LIST

MECHANICAL AND DRIVE TRAIN
152.2kW Drive train - Motor, motor control unit and E-gear(reducer)
73.4kWh lithium iron phosphate (LFP) battery
10.5kW on-board charger
2.2kW low voltage DC-DC Converter (LDC)
'Shift By Wire' Toggle Switch
Regenerative control paddle shifts
Heat pump system
Speed assist system
Voltage stabiliser
Vehicle to load (V2L)
In-cable control and protection device (IC-CPD)
Intelligent speed assist system (ISA)
STEERING SYSTEM
Electric power steering system
Driving modes - Comfort/Sport/Eco/Winter
Electric steering column lock
Manual tilt and telescopic steering wheel
Leather-covered steering wheel
Heated & leather-covered steering wheel (deluxe)
SUSPENSION
MacPherson strut front suspension with coil springs
Multi-link rear suspension with coil springs
BRAKE SYSTEM
Ventilated front disc brakes and rear disc brakes
Electronic parking brake with auto-hold function
Electronic stability control (ESC) with antilock brake system (ABS), traction control system (TCS), active roll-over protection (ARP), brake assist system (BAS), hill start assist (HSA), emergency stop signal (ESS), hill descent control (HDC), trailer stability assist (TSA) and multi collision brake system (MCB)
WHEELS AND TYRES
18" alloy wheels with 225/60R tyres
18" alloy wheels with 225/60R tyres (diamond-cut finish)
20" alloy wheels with 245/45R tyres (diamond-cut finish)
Tyre repair kit
Tyre pressure monitoring system
EXTERIOR
Body-coloured radiator grille
Active aero shutters
Exterior rear view mirrors, electrically controlled, foldable and heated with side repeaters
Body-coloured exterior door handles
Black-finished C pillars
Silver-finished C pillars (optional)
Sporty rear spoiler with high mounted LED stop lamp
Trailer hitch mounting
Black roof rails
Powered safety sunroof
Black two-tone exterior package – roof, roof rail, C-pillar and air spoiler (optional)
GLASS
Tinted and noise-control windscreen glass
Tinted glass on front & rear doors, quarterlights and tailgate
Solar glass on front doors and privacy glass on rear doors, quarterlights and tailgate
INTERIOR
Charcoal black interior colour
Teal grey & greige white 2-tone interior colour
Rawhide brown interior colour
Manual day and night interior rearview mirror
Electrochromic interior rearview mirror (deluxe)
Visual VIN label
Silver finished interior door handles
Sun visors with extension & illuminated vanity mirror
Luggage board with deluxe centre tray
Front door upper finish – TPU covering
Front and rear doors centre finish – TPU covering
Plastic front and rear door scuff
Stainless front door scuff and plastic rear door scuff (deluxe)
Cup holders in the front and rear
Luggage cover
Floor mats
Hang-on type accelerator pedal
Manual roller blind
SEATS
Manually height-adjustable driver's seat and manually adjustable passenger's seat
8-way power adjustable driver and front passenger seats
Front seats with 2-way powered lumbar support
Front sliding headrests with hanger
Passenger's seat walk-in-device
Front seat back map pockets with mobile phone holder
40:60 split foldable rear seat with 32.5 degree tilt and centre armrest
Woven cloth upholstery
Thermoplastic polyurethane (TPU) upholstery
Genuine leather upholstery
Ventilated front seats
Heated seats, front and rear
CLIMATE CONTROL
Front dual temperature zone auto air conditioning system
Automatic defogging system
Heater and air compressor
Air conditioner filter
After-blow mode
Conditioning (Cabin comfort) mode
Rear centre console air vent
CONVENIENCE
12.3" full colour LCD cluster including trip computer
Full LED front head lights with leveling
LED daytime running lights
LED front direction indicators
Rear combination lamp with LED brake lights
Mood lighting on instrument panel and front door trims
Automatic headlight control
Rain sensing windscreen wipers
Front safety powered windows
LED interior light
Dual smart key system with auto locking system
Anti-theft alarm
Twin horn
Intermittent rear wiper and washer
Front parking aid system with 4 sensors with 2-stage alarm
Rear parking aid system with 4 sensors and acoustic vehicle alerting system
Immobiliser
3D 360° degree around view monitoring system
Wireless charger
Smart power-operated tailgate
LED load area light with internal tailgate opening button
SAFETY
Reinforced monocoque body structure
Door impact beams for optimal protection from side impact
Dual and curtain airbags
Front seat side airbags
Driver's knee airbag
Front seat centre airbag
Airbag on/off switch for front passenger seat
Front seat belt ELR pretensioner and load limiter with anchor pretensioner
2nd row seatbelts with load limiters and pre-tensioners (both sides) & 3-point centre seatbelt
Child seat anchorage for rear seats
Seat belts reminder warning for front and rear all seating positions
Autonomous Emergency Braking (AEB) with Junction Crossing (AEB-JC), Junction Turning (AEB-JT), Head On (AEB-HO), Lane Departure Warning (LDW), Lane Keeping Assist (LKA), Smart High Beam (SHB), Traffic Sign Recognition (TSR), Front Vehicle Start Warning (FVSW), Driver Attention Warning (DAW) and Safety Distance Warning (SDW)
Rear Blind Spot-detection (BSD) including Blind Spot-detection Warning (BSW), Lane Change-Collision Warning (LCW), Rear Cross Traffic Warning (RCTW), Blind Spot-Collision Assist (BSA), Rear Cross-Traffic-Collision Assist (RCTA), Safety Exit Warning (SEW) and Rear-end Collision Warning(RCW)
Intelligent Adaptive Cruise Control (IACC) including Centering lane keeping assist (CLKA)
Navigation-based Automatic Lane Change (ALC)
Emergency Lane Keeping (ELK) including Emergency Steering Assist (ESA), Autonomous Emergency Steering (AES) and overtaking traffic
AUDIO & VIDEO
12.3" navigation system with HD rear view camera
Car connectivity - Apple CarPlay & Google Android Auto
Bluetooth hands free
USB charger and USB slot in the front
USB charger and USB slot in the rear
6 speakers
Shark-fin antenna
Remote control audio switches on steering wheel
Emergency call system
Alcohol interlocks system

* Some features may be optional or unavailable according to market. Please contact your local dealer for the exact details regarding vehicles sold in your area.

TECHNICAL DATA

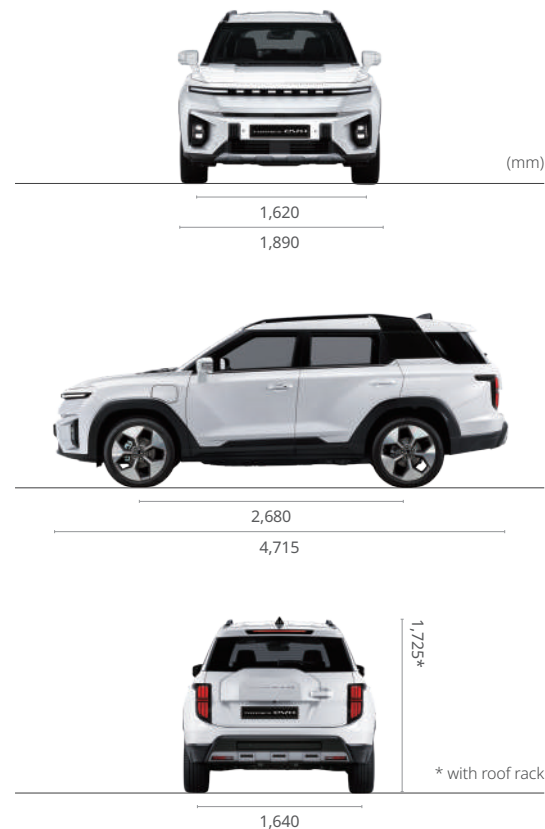
ENGINE		Electric motor		
DRIVEN WHEELS		2WD		
TRANSMISSION		1AT		
EXTERIOR DIMENSIONS	Overall length	mm	4,715	
	Overall width	mm	1,890	
	Overall height	mm	1,715 (1,725 : with roof rack)	
	Wheelbase	mm	2,680	
	Tread	Front	mm	1,620
		Rear	mm	1,640
	Overhang	Front	mm	930
		Rear	mm	1,105
	Approach angle	degree	18.3	
	Departure angle	degree	20.8	
Ramp angle	degree	15.3		
Minimum ground clearance	mm	169		
Minimum turning radius	m	5.42		
WEIGHT	Gross vehicle weight	kg	2,410	
	Kerb weight	kg	1,915	
	Gross trailer weight	Braked	kg	1,500
Unbraked		kg	500	
ELECTRIC MOTOR	Electric Motor	-	Interior permanent magnet synchronous motor	
	Max. power	kW	152.2	
		ps	206.9	
	Max. torque	Nm	339	
kg.m		34.6		
PERFORMANCE	Acceleration 0 -100 km/h	sec	8.11	
	Max. speed	km/h	175	
BATTERY	Battery	-	Lithium Iron Phosphate (LifePO ₄)	
	Standard charging time (0 to 100%)	Three phase :		
		30h (IC-CPD, 2kW) 9h (11kW)		
	Fast charge time (10% to 80%)	300kW : 37min		
		100kW : 42min		
	On-board charger power	kW	10.5	
	Capacity	kWh	73.4	
Battery voltage	V	390.4		
FUEL CONSUMPTION	Electric energy consumption	Wh/km	135.5 : City 186.5 : Combined	
	Electric range	km	462	
	Electric range city	km	635	

* The energy use will depend on speed, style of driving, climate and route conditions.

* The above technical data can vary slightly by regional certification requirements or sales specifications.

* The declared energy consumption was determined according to the Worldwide Harmonized Light Vehicles Test Procedure (WLTP).

DIMENSIONS





KG Mobility Corporation

92 Tongil-ro, Jung-gu, Seoul, Republic of Korea
www.kg-mobility.com/en

 www.facebook.com/KGMobilityGlobal

 www.instagram.com/kg_mobility_global

Some of the equipment shown in this brochure is optional and may not be available on all models or in all markets.
All specifications are subject to change without notice.
Please contact your local dealer for the latest information.